

**\$trauss** *metal*



Catalogue



# Strauss Metal

A strong brand on the path to international success



The Strauss-Metal company has been established in 1991 and has 100% Hungarian owner. The headquarters and factory is located in Pécs (Hungary), where our well-educated engineers are keep seeking to meet the needs of a changing marketplace and to satisfy all quality requirements.

Our innovative way of thinking and our flexibility represent a long-term commitment to our customers.

The "Safety-Precision-Reliability" statement is not just a slogan - we believe that this is the basis of a long term business partnership.

Product quality and a smooth flow of production are guaranteed by our factory's modern CAD/CAM-supported plant. The high standard of our activities is guaranteed by our workers knowledge, practice and the management's responsible leadership.

We have a complex product range in the field of enterprise security, bank security and cash handling. We offer design, production, implementation, education, consultancy, delivery and every kind of service in these fields. We are able to act as partners in the implementation of any other kind of metalworking regarding anything that is generated by our customers' unique needs; and we undertake the production of metal spare parts in job-related work depending on our production capacities.



## MAIN TECHNOLOGIES:

- Sheet cutting
- CNC stamping
- Laser cutting
- CNC press breaking
- Extrusion
- Deep draw pressing
- CO welding
- Screen printing
- Tap welding
- Point welding
- Die-casting
- Electrostatic powder coating



## QUALITY POLICY AND CERTIFICATES

With our overall quality management system, which is acknowledged via the MSZ EN ISO 9001:2001 standard, we look after not just our products' high quality - we also lay particular emphasis on giving optimal customer service; and we would like to always attain this high level of quality via the processing of customer feedback and with the continual development of our internal work flow.

- We have introduced the MSZ EN ISO 9001:2001 quality management system.
- All of our security products are approved according to EN 1143-1 or EN 1143-2.
- Our security products may also have ICECON certification
- To be able to successfully represent our company on the European market, we have made contact with VdS (Vertrauen durch Sicherheit), an independent testing institution dealing with security; and VdS certification of our products is in progress.



Our company regularly participates in different exhibitions and fairs as an exhibitor in the field of safety technology. Main exhibitions: Budapest, Zagreb, Bucharest, Hanover, Köln, Nuremberg, Pécs.

## WARRANTY

We guarantee **1 YEAR** warranty for all our products.

## AWARDS

- 2002 – Security product of the year prize for our Nova furniture safe
- 2004 – Security product of the year prize for our Super till
- 2004 – Honor of the Chamber of Trading and Industry of Pécs
- 2006 – Security product of the year prize for our Multisafe (Timebox)
- 2006 – A special Award from Expo Pécs
- 2007 – Laureate in the Hungarian Design Competition for our Multisafe (Timebox)



## CONTENTS

<b>INTRODUCTION</b>	2
<b>SMALL SAFES</b>	
Floor safes: - <i>Terra</i>	4
Wall safes: - <i>Merkur</i> , - <i>Prevent</i> , - <i>Black</i>	4
Furniture safes: - <i>Orion</i> , - <i>Omega</i> , - <i>Fortuna</i> , - <i>Nova</i> , - <i>SN-D</i>	6
<b>SAFES</b>	
- <i>SN-E</i> , - <i>SN-G</i> type safes	9
- <i>E-I</i> type safes	11
- <i>M-K</i> , - <i>M-M</i> type safes	12
Special safes: - <i>Vault for jewelry storing</i> , - <i>Antique vault</i> ,	
- <i>Two-door safe</i> , - <i>Modular safe</i>	14
<b>VALUE STORING PLACES</b>	
- Vault room door, - modular vault room	16
- Safe deposit box (designed for vault rooms), - Safe deposit boxes (designed for safes)	17
<b>CASH HANDLING IN BANKS</b>	
Small safes with drop-in mechanism	18
Drop-in safes: - <i>Super till</i> , - <i>Night Tresor</i>	19
<b>DATA SECURITY</b>	
- Business PC storage, - PC safe, - PC rack cabinet, - Mobile Workstation	21
Radio frequency shaded products: - <i>Shaded PC-case</i> , - <i>Shaded room</i>	21
<b>CLIENT CONTROL</b>	
Information desk	22
Client calling system	23
<b>PASSIVE PROTECTION</b>	
- Security doors, - Security walling, - Bullet-proof doors	24
<b>CASH CABINS</b>	
Mobile cash cabins	25
Safety passers: - <i>Cash desk</i> , - <i>Rotating tray</i> , - <i>Round tray</i> , - <i>Rotating tray with arm</i> ,	
- <i>A/4 sliding tray</i> , - <i>Talk-thru system</i>	26
Bullet-proof passers: - <i>Shoot-proof passers</i> , - <i>Desks</i> , - <i>Lock-gates</i>	27
Multisafe Design	28
Multisafe Light	29
Tills: - <i>Cash drawers</i> , - <i>Flip top cash drawer</i> , - <i>Vehicle cassa</i> , - <i>Banknote trap</i>	30
Cash handling fittings	31
<b>DOCUMENT MANAGEMENT</b>	
ISZ type document cabinet	32
Hanging folder filling cabinet	32
Fire resistant cabinet: - <i>FIRE type cabinet</i> , - <i>Data-box</i> , - <i>Fire-proof hanging folder filling cabinet</i>	33
Cabinet with drawers	34
ET type safety cabinet	34
<b>LOCKERS</b>	35
<b>OTHER METAL CABINETS</b>	36
<b>VALUE STORAGE IN HOTELS</b>	
Reception safe	37
Hotel room safes: - <i>Intelligent room safe</i> , - <i>Furniture and wall safes</i> , - <i>Laptop safe</i>	37
<b>KEY MANAGEMENT</b>	
Key boxes: - <i>Deep draw-pressed and bended design</i>	38
- Key storage with plasticine lock, - Key safes	39
- Intelligent key-boxes, - Intelligent posting safe, - Fire service emergency key-safe	40
<b>DOCUMENT AND VALUE TRANSACTION</b>	
Posting safe	41
<b>WEAPON STORAGE</b>	
Pistol containers: - <i>Pistol safe</i> , - <i>16 compartment pistol cabinet</i> , - <i>Pistol-box</i>	42
Light weapon cabinet	42
FSZ model certified weapon containers	43

## WALL SAFES

## MERKUR SAFE



An insurance rating of up to **1 million (M) Forint (Ft)** if connected to the alarm system (Hungary)

- According with VDMA 24992 A (1995)
- The door and the front are made of 4 mm thick steel sheet
- It fits into a narrow wall as well (250 mm)
- Colour: RAL 7035 light grey

Lock options:



Model	Ext. dim. (mm)	Weight	Capacity	Locking bolts	Code
	H x W x D	(kg)	(l)	(pc)	
Merkur 1	240 x 260 x 155,5	9,5	8	2	SM040201
Merkur 2	280 x 358 x 155,5	10	13,5	2	SM040202

## TERRA FLOOR SAFE



With a **KABA MAUER** lock

MABISZ C certification, which is equal with **Grade 00** according with EN 1143-1, an insurance rating of up to **6 M Ft** if connected to the alarm system (Hungary)

- Robust design
- The door and the front are made of 8 mm thick steel sheet
- Protected against lock drilling
- Cover sheet for protection against dust
- Colour: RAL 9005 jet black

Lock options:



Model	Ext. dim. (mm)	Weight	Capacity	Locking bolts	Code
	H x W x D	(kg)	(l)	(db)	
Terra 1	225 x 325 x 260	13	13,5	2	SM040601
Terra 2	282 x 400 x 260	19	23	5	SM040602



## PREVENT SAFE



MABISZ C certification, which is equal with **Grade 00** according with EN 1143-1, an insurance rating of up to **6 M Ft** if connected to the alarm system (Hungary)

- It fits into a narrow wall as well (250 mm)
- Multiple-way locking
- Robust design
- The door and the front are made of 8 mm thick steel sheet
- Protected against lock drilling
- Optimal interior shape
- Colour: RAL 9005 jet black
- The schedule contains the optimal number of shelves\*

Lock options:



Model	Ext. dim. (mm)	Weight	Capacity	* Shelves	Locking bolts	Code
	H x W x D	(kg)	(l)	(pc)	(pc)	
Prevent-1	225 x 325 x 160	9	11	-	2	SM040401
Prevent-2	282 x 400 x 160	15	12	1	5	SM040402

## BLACK SAFE



With a **KABA MAUER** lock

MABISZ C certification, which is equal with **Grade 00** according with EN 1143-1, an insurance rating of up to **6 M Ft** if connected to the alarm system (Hungary)

- Robust design going into a 300 mm wall structure
- The door and the front are made of 8 mm thick steel sheet
- Removable shelves, optimal interior shape
- Protected against lock drilling
- Black-4 is a standing safe
- Colour: RAL 9005 jet black
- The schedule contains the optimal number of shelves\*

Lock options:



Electronic locks are only available from size 2.



Model	Ext. dim. (mm)	Weight	Capacity	* Shelves	Locking bolts	Code
	H x W x D	(kg)	(l)	(pc)	(pc)	
Black-1	225 x 325 x 266	11	13,5	-	2	SM040301
Black-2	282 x 400 x 266	17	22,5	1	4	SM040302
Black-3	310 x 485 x 266	23	29,5	1	4	SM040303
Black-4	674 x 400 x 266	34	54,5	2	5	SM040304

## FURNITURE SAFES

## ORION SAFE



An insurance rating of up to **1 M Ft** if connected to the alarm system (Hungary)

- According with **VDMA 24992 A** (1995)
- The door and the front are made of 4 mm thick steel sheet
- Protected against lock drilling
- Fixing holes on the base
- With a fixing kit
- Colour: RAL 5009 azure blue

**Lock options:**



Model	Ext. dim. (mm)	Weight	Capacity	Locking bolts	Code
	H x W x D	(kg)	(l)	(pc)	
Orion 1	225 x 320 x 270	7	12	2	SM050201

## OMEGA SAFE



With a **KABA MAUER** lock

An insurance rating of up to **1 M Ft** if connected to the alarm system (Hungary)

- According with **VDMA 24992 A** (1995)
- The door and the front are made of 4 mm thick steel sheet
- Protected against lock drilling
- Removable shelves, easily utilized inner space
- Fixing holes on the base and the back
- With a fixing kit
- Colour: RAL 7016 anthracite grey
- The schedule contains the optimal number of shelves\*

**Option:** Internal compartment  
(Only for the Omega 3 type)

**Lock options:**



Model	Ext. dim. (mm)	Weight	Capacity	* Shelves	Locking bolts	Code
	H x W x D		(l)	(pc)	(pc)	
Omega 1	170 x 290 x 250	6,8	12	-	3	SM050101
Omega 2	280 x 360 x 333	13	34	1	3	SM050102
Omega 3	450 x 360 x 333	19	53	1	3	SM050103
Omega 3 (Inner comp.)	450 x 360 x 333	19	53	1	3	SM050104
Omega 4 (Laptop)	164 x 370 x 430	12	20	-	2	SM050105

## FORTUNA SAFE



**S1 certification** according with **EN 14450**; an insurance rating of up to **3 M Ft** if connected to the alarm system (Hungary)

- Robust design
- The door is made of 6 mm thick steel sheet, and the body is made of 3 mm thick steel sheet
- Protected against lock drilling
- Fixing holes on the base
- Colour: RAL 9005 jet black
- With a fixing kit
- The schedule contains the optimal number of shelves\*

**Lock options:**



Model	Ext. dim. (mm)	Weight	Capacity	* Shelves	Locking bolts	Code
	H x W x D	(kg)	(l)	(pc)	(pc)	
Fortuna 1	235 x 340 x 275	14	22	-	2	SM050401
Fortuna 2	305 x 400 x 345	24	33	-	5	SM050402
Fortuna 3	425 x 400 x 425	35	58	1	5	SM050403
Fortuna 4	550 x 400 x 425	42	98	1	5	SM050404

## NOVA SAFE

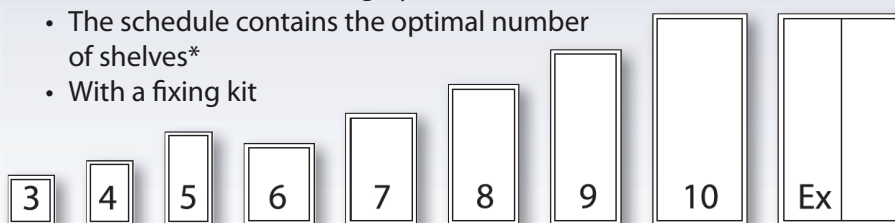
With a **KABA MAUER** lock



**S1 certification** according with **EN 14450**; an insurance rating of up to **3 M Ft** if connected to the alarm system (Hungary)

**Lock options:**

- Robust design
- The door is made of 6 mm thick steel sheet, and the body is made of 3 mm thick steel sheet
- Protected against lock drilling
- Fixing holes on the base and the back
- Colour: RAL 7042 Traffic grey
- The schedule contains the optimal number of shelves\*
- With a fixing kit



Model	Ext. dim. (mm)	Weight	Capacity	* Shelves	Locking bolts	Code
	H x W x D	(kg)	(l)	(pc)	(pc)	
Nova 1	235 x 340 x 275	14	22	-	2	SM050301
Nova 2	305 x 400 x 345	24	33	1	4	SM050302
Nova 3	425 x 400 x 425	35	58	1	4	SM050303
Nova 4	550 x 400 x 425	42	98	2	5	SM050304
Nova 5	800 x 400 x 425	56	120	2	5	SM050305
Nova 6	700 x 600 x 600	66	147	2	5	SM050306
Nova 7	950 x 600 x 600	95	266	2	5	SM050307
Nova 8	1200 x 600 x 600	134	424	3	5	SM050308
Nova 9	1500 x 600 x 600	155	558	3	5	SM050309
Nova 10	1800 x 800 x 600	195	670	4	5	SM050310
Nova Ex	1800 x 800 x 650	250	893	4	7	SM050311

**Security product of the year 2002.**



## SN-D SAFE



**EU-0**  
EN-1143-1



- MABISZ D certification, which is equal with **Grade 0** according with EN 1143-1
- An insurance rating of up to **10 M Ft** if connected to the alarm system (Hungary)
- Ready for an alarm system connection
- Fixing is obligatory, delivered with a fixing kit
- It can be operated with 1 **VdS-1 certified** safe lock
- May be ordered with a **double lock** design
- Mounted with a **KABA-MAUER** lock as standard
- Double wall safe
- Electrostatic powder coated
- Colour: RAL 7035 light grey
- Moderately fire-proof
- Optional accessories are on page 12
- The schedule contains the optimal number of shelves\*

## Lock options:



Key-lock



Mechanical lock

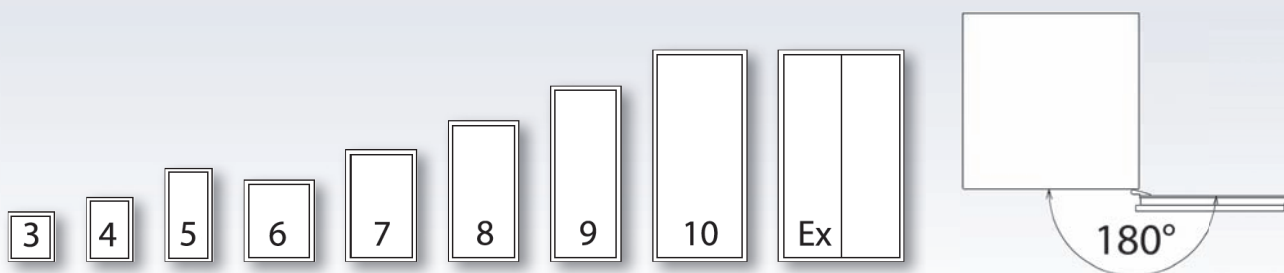


Electronic lock



## Available accessories:

- Double lock option
- Shelf
- Inner box
- Hanging folder
- Databox
- Inner box with drawers for size 10 and Extra
- Drop-in head for banknotes
- Drop-in head size A/4, A/5



Model	Ext. dim. (mm) H x W x D	Int. dim. (mm) H x W x D	Weight (kg)	Capacity (l)	* Shelves (pc)	Locking bolts (pc)	Code
SN D-3	425 x 400 x 425	365 x 340 x 339	50	42	1	4	SM060101
SN D-4	550 x 400 x 425	490 x 340 x 339	65	56	2	5	SM060102
SN D-5	800 x 400 x 425	740 x 340 x 339	87	85	2	5	SM060103
SN D-6	700 x 600 x 600	630 x 530 x 507	120	169	1	5	SM060104
SN D-7	950 x 600 x 600	880 x 530 x 507	152	236	2	5	SM060105
SN D-8	1200 x 600 x 600	1130 x 530 x 507	175	303	2	5	SM060106
SN D-9	1500 x 600 x 600	1430 x 530 x 507	227	384	3	5	SM060107
SN D-10	1800 x 800 x 600	1730 x 730 x 507	313	640	4	5	SM060108
SN D-Ex	1800 x 1070 x 650	1730 x 1000 x 557	413	963	4	7	SM060109

## SN-E SAFE

- MABISZ E certification, which is equal with **Grade I** according with EN 1143-1
- An insurance rating of up to **16 M Ft** if connected to the alarm system (Hungary)
- Ready for an alarm system connection
- Fixing is obligatory, delivered with a fixing kit
- It can be operated with 1 **VdS-1 certified** safe lock
- May be ordered with a **double lock** design
- Mounted with a **KABA-MAUER** lock as standard
- Double wall safe
- Massive but light design
- Aesthetic, easy to clean
- Electrostatic powder coated
- Colour: RAL 7035 light grey
- Moderately fire-proof
- Optional accessories are on page 12
- The schedule contains the optimal number of shelves\*

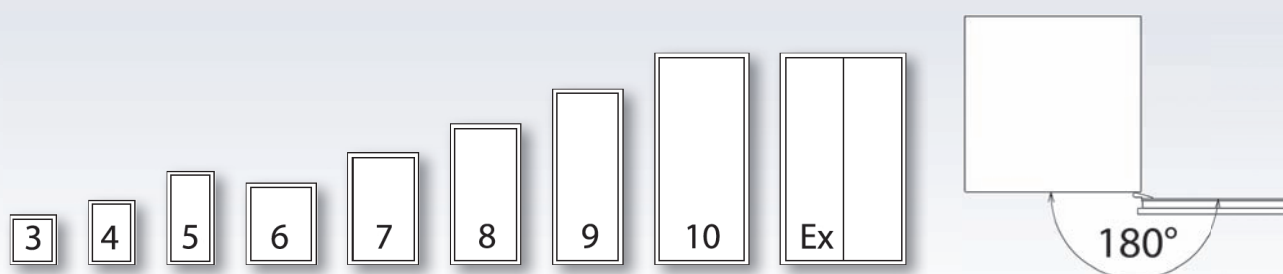


### Lock options:



### Available accessories:

- Double lock option
- Shelf
- Inner box
- Hanging folder
- Databox
- Inner box with drawers for size 10 and Extra
- Drop-in head for banknotes
- Drop-in head size A/4. A/5



Model	Ext. dim. (mm)	Int. dim. (mm)	Weight	Capacity	*Shelves	Locking bolts	Code
	H x W x D	H x W x D	(kg)	(l)	(pc)	(pc)	
SN E-4	550 x 400 x 425	490 x 340 x 280	96	47	2	5	SM060202
SN E-5	800 x 400 x 425	740 x 340 x 280	120	70	2	5	SM060203
SN E-6	700 x 600 x 600	630 x 530 x 447	184	149	1	5	SM060204
SN E-7	950 x 600 x 600	880 x 530 x 447	231	209	2	5	SM060205
SN E-8	1200 x 600 x 600	1130 x 530 x 447	283	268	2	5	SM060206
SN E-9	1500 x 600 x 600	1430 x 530 x 437	344	331	3	5	SM060207
SN E-10	1800 x 800 x 600	1730 x 730 x 437	483	552	4	5	SM060208
SN E-Ex	1800 x 1070 x 650	1730 x 1000 x 487	630	843	4	7	SM060209

## SN-G SAFE



**EU-II**  
EN 1143-1



- MABISZ G certification, which is equal with **Grade II** according with EN 1143-1
- An insurance rating of up to **40 M Ft** if connected to the alarm system (Hungary)
- Ready for alarm system connection
- Fixing is obligatory, delivered with a fixing kit
- It can be operated with 1 **VdS-1 certified** safe lock
- May be ordered with a **double lock** design
- Mounted with a **KABA-MAUER** lock as standard
- Double wall safe
- Electrostatic powder coated
- Colour: RAL 7035 light grey
- Moderately fire-proof
- Optional accessories are on page 12
- The schedule contains the optimal number of shelves\*

**Lock options:**

Key-lock



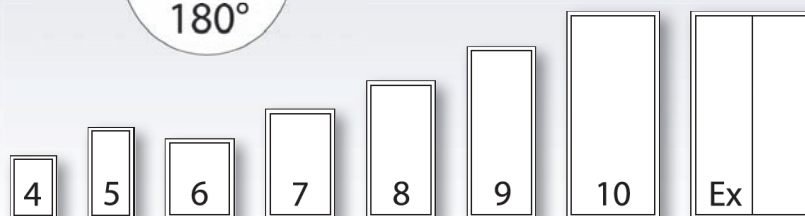
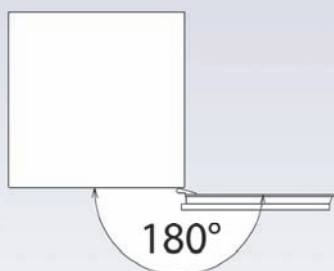
Mechanical lock



Electronic lock

**Available accessories:**

- Double lock option
- Shelf
- Inner box
- Hanging folder
- Databox
- Inner box with drawers for size 10 and Extra
- Drop-in head for banknotes
- Drop-in head size A/4, A/5



Model	Ext. dim. (mm) H x W x D	Int. dim. (mm) H x W x D	Weight (kg)	Capacity (l)	*Shelves (pc)	Locking bolts (pc)	Code
SN G - 4	550 x 400 x 425	490 x 340 x 280	98	47	2	5	SM060301
SN G - 5	800 x 400 x 425	740 x 340 x 280	122	70	2	5	SM060302
SN G - 6	700 x 600 x 600	630 x 530 x 447	186	149	1	5	SM060303
SN G - 7	950 x 600 x 600	880 x 530 x 447	233	209	2	5	SM060304
SN G - 8	1200 x 600 x 600	1130 x 530 x 447	285	268	2	5	SM060305
SN G - 9	1500 x 600 x 600	1430 x 530 x 437	346	331	3	5	SM060306
SN G-10	1800 x 800 x 600	1730 x 730 x 437	485	552	4	5	SM060307
SN G-Ex	1800 x 1070 x 650	1730 x 1000 x 487	630	843	4	11	SM060308



## E-I SAFE

- MABISZ I certification, which is equal with **Grade III** according with EN 1143-1
- An insurance rating of up to **70 M Ft** (Hungary)
- Obligatory to connect up with the alarm system
- Ready for alarm system connection
- It can be operated with 1 VdS-2 certified safe lock
- May be ordered with a double lock design
- Mounted with a **KABA-MAUER** lock as standard
- Special consistency concrete filling, designed for high safety requirements
- Fixing is obligatory below 1000kg (MABISZ instruction), delivered with a fixing kit
- Colour: RAL 7035 light grey, lacquered with solvent paint
- Moderately fire-proof
- Optional accessories are on page 12
- The schedule contains the optimal number of shelves\*

**EU-III**  
EN 1143-1

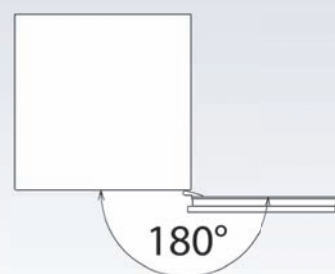


### Lock options:



### Available accessories:

- Double lock option
- Shelf
- Inner box
- Hanging folder
- Databox
- Inner box with drawers for size 10 and Extra
- Drop-in head for banknotes
- Drop-in head size A/4, A/5



Model	Ext. dim. (mm)	Int. dim. (mm)	Weight	Capacity	*Shelves	Locking bolts	Code
	H x W x D	H x W x D	(kg)	(l)	(pc)	(pc)	
E I-6	700 x 680 x 650	560 x 540 x 449	530	136	1	5+3	SM060401
E I-7	950 x 680 x 650	810 x 540 x 449	687	196	2	5+3	SM060402
E I-8	1200 x 680 x 650	1060 x 540 x 449	843	257	3	5+3	SM060403
E I-9	1500 x 680 x 650	1360 x 540 x 449	983	330	3	5+3	SM060404
E I-10	1800 x 780 x 650	1660 x 640 x 449	1239	477	4	7+5	SM060405
E I-Ex	1780 x 1130 x 700	1640 x 990 x 499	1623	810	-	11+6	SM060406

## M-K SAFE



**EU-IV**  
EN 1143-1



- MABISZ K certification, which is equal with **Grade IV** according with EN 1143-1
- An insurance rating of up to **120 M Ft** (Hungary)
- Obligatory to connect up with the alarm system
- Ready for alarm system connection
- It may be operated with 2 **VdS-2 certified** safe locks
- Mounted with **KABA-MAUER** locks as standard
- Special consistency concrete filling
- Fixing is obligatory below 1000kg (MABISZ instruction), delivered with a fixing kit
- The schedule contains the optimal number of shelves\*
- Colour: RAL 7035 light grey, lacquered
- Moderately fire-proof

**Available accessories:**

- Inner box with shelves
- Inner box with drawers
- Inner box with internal compartments
- Hanging document folder
- Inner safe deposit boxes
- Databox



7

8

9

10

Ex

**Lock options:**

Key-lock



Mechanical lock



Electronic lock



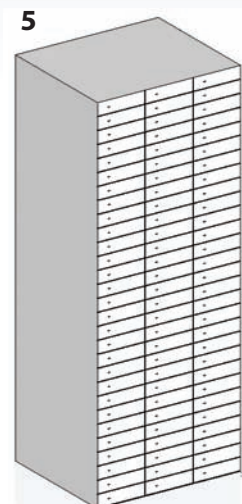
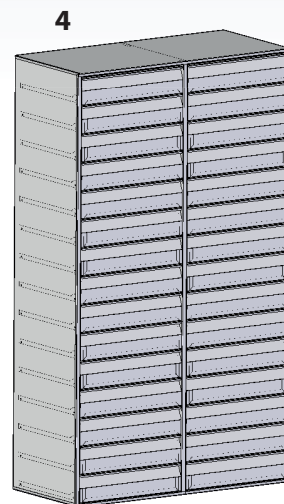
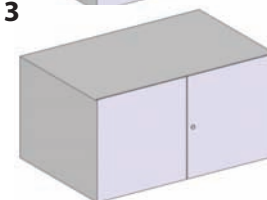
Kaba 525 and 528



Paxos

Model	Ext. dim. (mm)	Int. dim. (mm)	Weight	Capacity	* Shelves	Locking bolts	Code
	H x W x D	H x W x D	(kg)	(l)	(pc)	(pc)	
MK-7	950 x 700 x 637	810 x 540 x 405	743	173	2	7+3	SM060201
MK-8	1200 x 700 x 637	1060 x 540 x 405	898	227	3	7+3	SM060202
MK-9	1500 x 700 x 637	1360 x 540 x 405	1083	293	3	7+3	SM060203
MK-10	1800 x 800 x 637	1660 x 640 x 405	1395	425	4	9+5	SM060204
MK-Ex	1800 x 1150 x 737	1640 x 990 x 505	1883	820	-	13+10	SM060205

Numb	Denomination	Size	Code
1	Shelf	6-9	SM110101
		10	SM110102
		Ex	SM110103
2	Internal box 180	6-9	SM110201
		10	SM110202
		Ex	SM110203
3	Internal box 360	6-9	SM110301
		10	SM110302
		Ex	SM110303
4	Inner box with drawers	(1 column)10	SM110401
		(2 column) Ex	SM110402
5	Inner safe deposit box	(2 column)10	SM110501
		(3 column) Ex	SM110502
6	Databox		SM110601

**Available accessories**

## M-M SAFE

EU-V  
EN 1143-1



- MABISZ M certification, which is equal with **Grade V** according with EN 1143-1
- An insurance rating of up to **300 M Ft** (Hungary)
- Obligatory to connect up with the alarm system
- Ready for alarm system connection
- It may be operated with 2 VdS-2 certified safe locks
- Mounted with KABA-MAUER locks as standard
- Special consistency concrete filling, designed for high safety requirements
- Fixing is obligatory below 1000kg (MABISZ instruction), delivered with a fixing kit
- Moderately fire-proof
- Colour: RAL 7035 light grey, lacquered
- The schedule contains the optimal number of shelves\*

### Available accessories:

- Inner box with shelf
- Inner box with drawer
- Inner box with compartment
- Hanging folder filing fitting
- Deposit box
- Data-box

### Lock options:



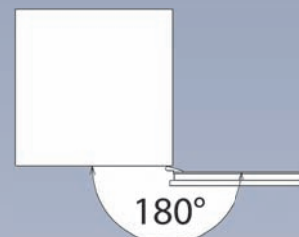
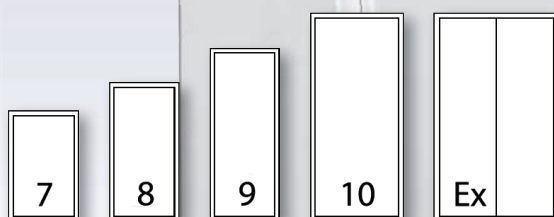
Key-lock



Mechanical lock



Electronic lock



Model	Ext. dim. (mm)	Int. dim. (mm)	Weight	Capacity	*Shelves	Locking bolts	Code
	H x W x D	H x W x D	(kg)	(l)	(pc)	(pc)	
MM-7	950 x 700 x 637	810 x 540 x 405	743	173	2	7+3	SM060601
MM-8	1200 x 700 x 637	1060 x 540 x 405	898	227	3	7+3	SM060602
MM-9	1500 x 700 x 637	1360 x 540 x 405	1083	293	3	7+3	SM060603
MM-10	1800 x 800 x 637	1660 x 640 x 405	1395	425	4	9+5	SM060604
MM-Ex	1800 x 1150 x 737	1640 x 990 x 505	1883	820	-	13+10	SM060604



## VAULT FOR JEWELRY STORING



SM060604 + SM110402

- Our high security vaults may be ordered with an inner box, one which has drawers or shelves in it. This kind of product will be beneficial for jewelry shops or pawnshops.
- With high load capacity drawers

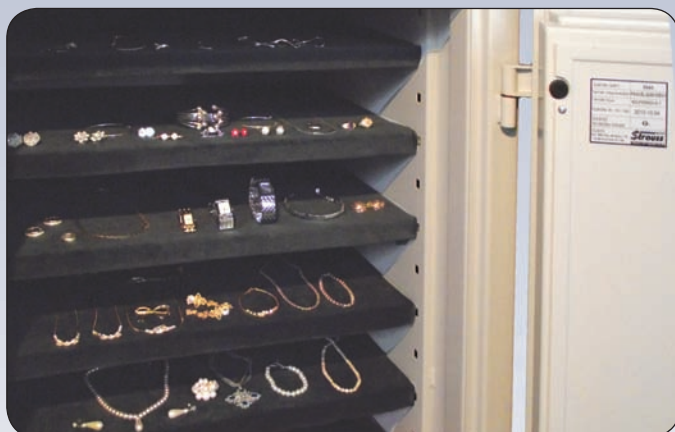


SM061901 – 550 x 400 x 425 mm

**We can create precisely what you have dreamed of!**

### PRIVATE JEWELRY SAFE

- You can store your expensive jewelry, for what you fear at home in a vault as well
- With different EN 1143-1 grades
- With beech, oak or high quality dried wood drawers and plush covered or padded shelves



To make operations easier, the safe's removable shelves are easily able to be put onto the counter



## ANTIQUE VAULTS



**EU-II**  
EN 1143-1

- Let your vault be an ornament in your office!
- Are style and classic traditions important for you?
- If the majority of your furniture is elegant and it will not go together with modern styles and shapes, then choose our antique vault.
- An exclusive product with antique decoration elements.
- It brings to mind ancient times and, at the same time, takes on board modern safety requirements.



NOVA 2

The attributes of this type are noted on page 7.



SM061801 – 1200 x 600 x 600 mm

## TWO-DOOR SAFES

EU-I  
EN 1143-1



### HU-2 type

- MABISZ E certification, which is equal with **Grade I** according with EN 1143-1
- An insurance rating of up to **16 M Ft** if connected to the alarm system (Hungary)
- Ready for alarm system connection
- Fixing is obligatory, delivered with a fixing kit
- It may be operated with 1 **VdS-1** certified safe lock
- May be ordered with a **double lock** design
- Mounted with **KABA-MAUER** locks as standard
- Double wall safe
- With lower safe compartment (S1 certification according with EN 14450)
- Massive but light implementation
- Aesthetic, easy to clean
- Electrostatic powder coated
- Colour: RAL 7035 light grey
- Moderately fire-proof

#### Lock options:



Key-lock



Mechanical lock



Electronic lock



SM061601 – 1250 X 500 X 410 mm

## MODULAR SAFE

EU-VI  
EN 1143-1



### DIV-6 type

- MABISZ N certification, which is equal with **Grade VI** according with EN 1143-1
- An insurance rating of up to **500 M Ft** (Hungary)
- Obligatory to connect up with the alarm system
- Ready for alarm system connection
- It may be operated with 2 **VdS-3** certified safe locks
- Fixing is obligatory below 1000kg (MABISZ instruction), delivered with a fixing kit
- Special consistency concrete filling, designed for high safety requirements
- Moderately fire-proof
- Colour: RAL 7035 light grey, lacquered
- Modular implementation, which makes bigger safes' transportation easier when dealing with narrow places, e. g. on staircases, in corridors

#### Lock options:



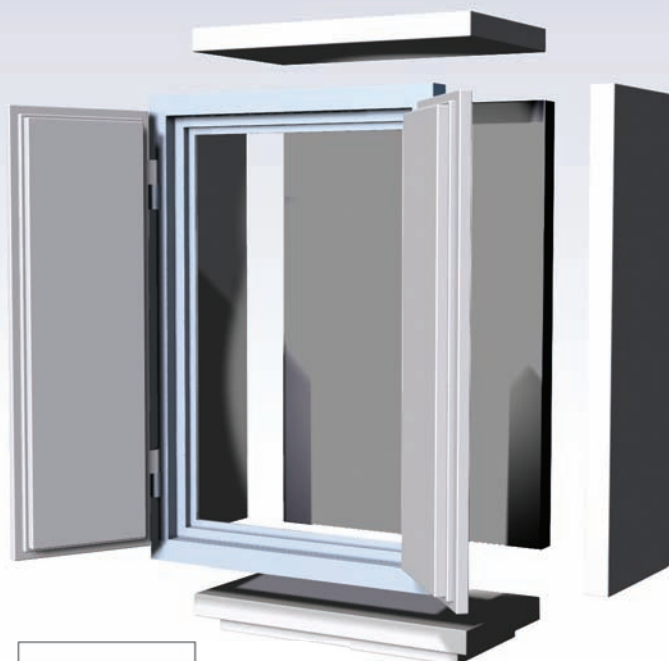
Key-lock



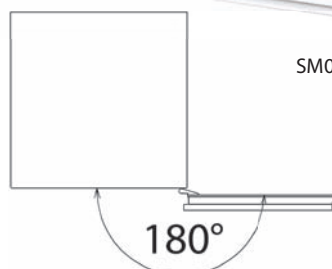
Mechanical lock



Electronic lock



SM061701



# VAULT ROOM

## VAULT ROOM, VAULT ROOM DOOR

**EU-VI**  
EN 1143-1



**MABISZ** certification (according with **EN 1143-1**):

Grade V (270 RU), with a **500 M Ft** insurance limit  
Grade VI (400 RU), with a **1 Billion Ft** (Hungary)  
insurance limit

- Obligatory to connect up with the alarm system
- Locks

Grade V - 2 VdS-2 class locks

Grade VI - 2 VdS-3 class locks



Key-lock



Mechanical lock



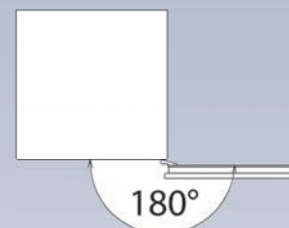
Kaba 525 and 528



Paxos



- Can be ordered with a security grille
- Painting: with a ground coat as standard



Model	Ext. dim.	Doorway dim.	Wall weight	Door weight	Certification	Code
	Mag. x Szél. x Vast.	Mag. x Szél.	(kg)	(l)	(MABISZ)	
MP-V	2350 x 1100 x 75	1950 x 900	250	855	O/1	SM060701
MP-VI	2350 x 1100 x 150	1950 x 900	257	855	O/2	SM060702

**It may be ordered in any kind of certification category**, one according with the EN 1143-1 standard

- Recommended for persons in the banking sector, industry, commerce, the health industry, security forwarding, the armed forces and also for private persons.
- With locks that are suitable for relevant certification (even the **KABA PAXOS** lock, which offers the highest degree of security), to a unique extent if required.
- A specially designed filling, with which the product's weight is reduced significantly. It also reduces the delivery weight and the load of the slab

## MODULAR VAULT ROOM

**EU-VI**  
EN 1143-1



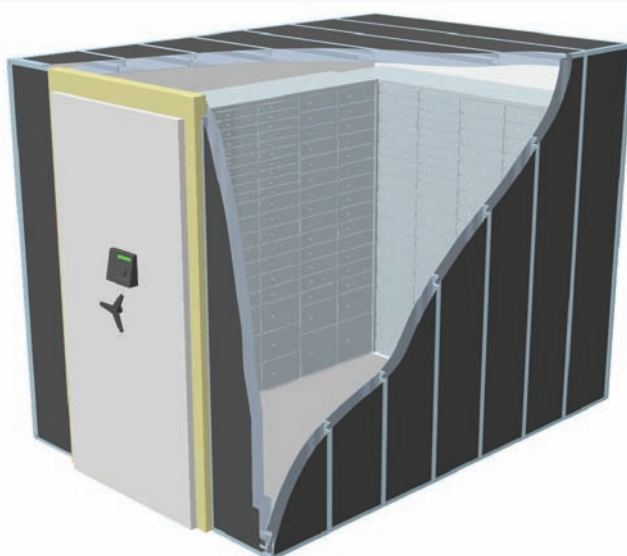
A modular design that we can easily adapt to customers' unique needs. It can be built as an extension of an existing room or as room in the room implementation. In a case of relocation or loss of interest, it can be disassembled, delivered, and reassembled if needed.

### Available units:

- Vault room door
- Complex modular vault room
- Complex modular vault room with functional assets (e.g. safe deposit boxes)

### Options:

- Locks: VdS-2 certified, or with higher-level certification
- Security grille
- Ventilation fan
- Cable pipe



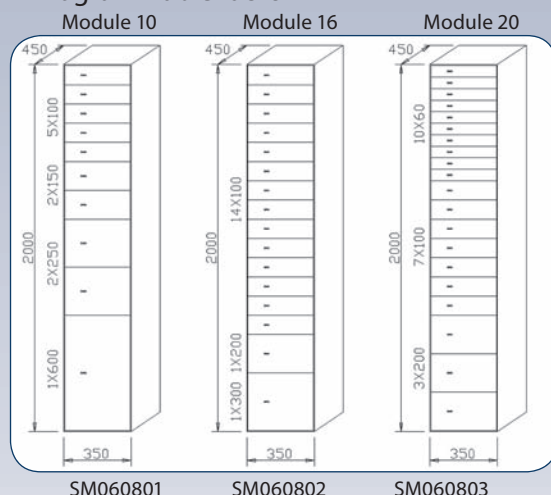


## SAFE DEPOSIT BOXES (Designed for vault rooms)

- The front is made of 3mm thick brushed stainless steel sheet, while the doors are laser trimmed, possessing a strong door hinge
- 1,5mm steel sheet walls
- Body paint: plastic powder sprinkled RAL 7035 (grey)
- The cabinets can be fitted side-by-side
- Lock: a **MAUER** 78056 E-LO Safe main key system lock (with 2 keys).
- With a levelling scaffold adjusted to the size of the cabinet

### Options:

- Confidence strengthening boxes are available (in 50, 90, 140, 190, and 240 mm heights)
- Stainless steel cover sheet
- Stainless steel corner
- Extra bank key
- Extra client key
- Programmable locks



## SAFE DEPOSIT BOXES (Designed for safes)

EU O-V  
EN 1143-1

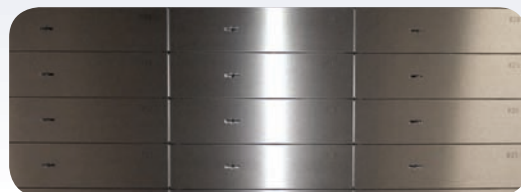


This product offers a solution in the field of value protection for those financial institutions that do not have their own vault room.

An easily relocatable and secure safe deposit box offering. Certification according with EN 1143-1.

Safe deposit boxes with 2 or 3 columns can be put into the following safes:

- SN D - 10
- SN E - 10, Ex
- SN G - 10, Ex
- E I - 10, Ex
- M K - 10, Ex
- M M - 10, Ex



### Options:

- Confidence strengthening box:
  - height 50, 90, 140, 190, 240 mm, width 300 mm, depth 330 mm
- **Lock:** a **MAUER** 78056 E-LO Safe main key system lock (with 2 keys).
- Strauss-Metál security locks on boxes
- **Colour:** RAL 7035



Model number on page 12



Model number on page 12

## SMALL SAFES WITH DROP-IN MECHANISM



With these products it is possible to put in and store bigger amount of money without opening the safe. Our safes and strong-boxes are also made with different kinds of drop-in mechanisms. The shape of the drop-in mechanism will be amended according to the type and grading of the safe. All of our drop safes are provided with a serrated anti-fishing plate.

### Variations:

No.	Shape of the drop-in mechanism	Basic models	Code	EN 1143-1 or EN 14450
1.	Drop slot on the front or on the top	NOVA 1-8	SM050501 - 08	S1 (EN 14450)
2.	Car safe with a drop slot on the front	S1	SM050701	S1 (EN 14450)
3.	Drop-in duct for wall safes	BLACKSAFE 1-4	SM040501 - 04	C
4.	Drop-in opening with a tilting door on the front	NOVA-5, SN-D-5, SN-E-5, SN-G-5	SM050601; SM060901; -11; -21	S1 (EN 14450); Grade 0, Grade I, Grade II
5.	Rotating drop-in head for banknotes and for an A/4 or A/5 size package/briefcase. The drop-in head can be built facing the front or the back.	Grade II, III (from size 6)	SM061001; SM061002	Grade II; I
6.	Through-the-wall installation drawer with a drop-in opening (e.g. when the cash desk and the safe are in different rooms)	SN-D-7, SN-E-7, SN-G-7	SM061201; SM061301; SM061401	Grade 0, Grade I, Grade II
7.	Night tresor, -mechanical, -electronic	SN-G, E-I	NTM-1 SM110701	Grade II; I
8.	Super-tills with different drop-in mechanisms	See also on page 20. (Super tills)	See also on page 20. (Super tills)	S1 (EN 14450); Grade 0, Grade I, Grade II



## DROP-IN SAFES

### SUPER TILL

EU-II  
EN 1143-1

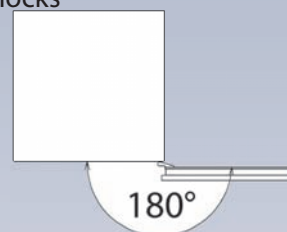


MABISZ S1, D, E, G certification, which is equal with **S1, Grade 0, I, II** according with EN 1143-1 and EN 14450. Value storing cabinet with a drop-in drawer

- For the safe insertion/storage of higher value amounts without a safe opening requirement
- With the two-drawer version, money can be collected separately (2 cashiers); can be utilized at a currency cash desk
- The lower safe (double-wall) or small safe is certified according to the chart below
- The door is locked by a VdS 1-certified **KABA-MAUER** or **LAGARD** type electronic combination lock.
- The money handling drawers and the safe are separate from each other
- Mounted with an anti-fishing device
- Drawers are also available with VdS certified locks
- Colour: RAL7035 light grey
- Option: silent alarm

#### Available accessories:

- Coin tray
- Adjustable bank note storage
- Removable ("U" shape) banknote holder
- Banknote and coin storing tray



#### Lock options:



Key-lock



Mechanical lock



Electronic lock



Model	External dimension H x W x D	Weight (kg)	Drawer (pc)	Locking bolts (pc)	Certificate (Cat.)	Code
SK-1	700 x 600 x 445	90	1	5	Grade 0	SM070301
SK-1	700 x 600 x 445	137	1	5	Grade I	SM070401
SK-1	700 x 600 x 445	139	1	5	Grade II	SM070501
SK-2/1	700 x 450 x 572	100	1	5	Grade 0	SM070302
SK-2/2	700 x 450 x 572	100	2	5	Grade 0	SM070303
SK-2/1	700 x 450 x 572	140	1	5	Grade I	SM070402
SK-2/2	700 x 450 x 572	140	2	5	Grade I	SM070403
SK-2/1	700 x 450 x 572	142	1	5	Grade II	SM070502
SK-2/2	700 x 450 x 572	142	2	5	Grade II	SM070503
SK-3/1	700 x 450 x 550	66	1	5	S1 (EN 14450)	SM070601
SK-3/2	700 x 450 x 550	70	2	5	S1 (EN 14450)	SM070602
SK-4	700 x 450 x 700	146	1	5	Grade I	SM070404



## DROP-IN SAFES

## NIGHT TRESOR (CASH DEPOSIT)

MABISZ G and I certification, which is equal with **Grade II and III** according with EN 1143-1



This product is recommended for banks, cooperative banks and for clients (e.g. restaurants, cinemas, enterprises who have their office in a business house; or private persons) who need to safely store their valuables or cash after banking hours (including at weekends).

**Operation:**

The drop slot, if given a mechanical drop-in mechanism, can be freed by pressing down the "drop-in arm". With an electronic operation the door opens automatically after identification. Through this slot the cassette or the envelope falls down into the lower part of the safe.

**Electronic implementation**

- Bolting and opening with a 12V electric motor
- An anti-vandal keyboard and display
- Identification: Dallas chip, Pin code, Credit card + pin code
- Control of throw-ins: with a BAR code, with RFID (along with a proximity reader)
- Gives a receipt if required

**Mechanical implementation, operated via hand**

The drop slot is bolted with a combination lock and can be opened only by an authorized person, i.e. the person who knows the combination. After the bolt has been unlocked, envelopes, cassettes and/or briefcases can be put into the safe.

- With a rack
- Equipped with a transport bag
- Available in different colours
- External masking if built into a wall

**Options:**

- a self-closing rack bag, an uninterruptible power-supply unit



NTM-1 SM110701

NTT-1  
SM110601NTZ-1  
SM110602NTZS-1  
SM110603NTK-1  
SM110604

SM061501

# PC STORAGE CABINETS

## Business PC storage

- For the protection of official data stored on PC
- Beyond data protection, it also provides a solution against problems caused by dust



### PC safe (Nova)

- Store your PC in a safe
- The data stored on our PCs are a value that can be expressed in money terms, too - and we need to protect it. So our computer safe is the solution!

**WHEN A PASSWORD IS NOT ENOUGH ANY MORE!**

600 x 300 x 600  
SM120201



600 x 260 x 600  
SM120101

## PC rack cabinet

We offer our server cabinets to offices and companies for central systematization of their PC networks.

The structure of the cabinet enables it to be eminently useful in a wide range of fields.

Easily accessible for service staff.

The location of cables and suitable ventilation is here dealt with.

With an S1 certification (EN 14450) if needed



1600 x 600 x 450  
SM120301

1600 x 600 x 450  
SM120302



### Mobile Workstation (Workshop PC)

Makes one's PC specifically useful for factories, workshops, laboratories, warehouses, shops and schools.

In the lockable cabinet you can comfortably locate the following:

- Monitor,
- Keyboard,
- PC holder
- Printer

Gives protection against dust, splashed liquid, higher temperature variations and unauthorized access.

1800 x 650 x 450  
SM120401

## Shaded (TEMPEST) products: PC-case, Rack-cabinet, Shaded room

For the establishment of workstations that require major data protection and which exist in the following areas:

Data protection relating to security and protection services, suitable storage of industrial and business secrets.

Prevents the picking-up and interpreting of signals emitted by PCs and telecommunications; protection against electrical discharge, static charge and lightning.

Certified by Hubel Ltd. (EMC and TEMPEST)



95 x 380 x 345  
SM120501



SM120501



2350 x 2250 x 2150  
SM120601  
4-20 m<sup>2</sup>-ig

## INFORMATION DESK

### INFORMATION DESK

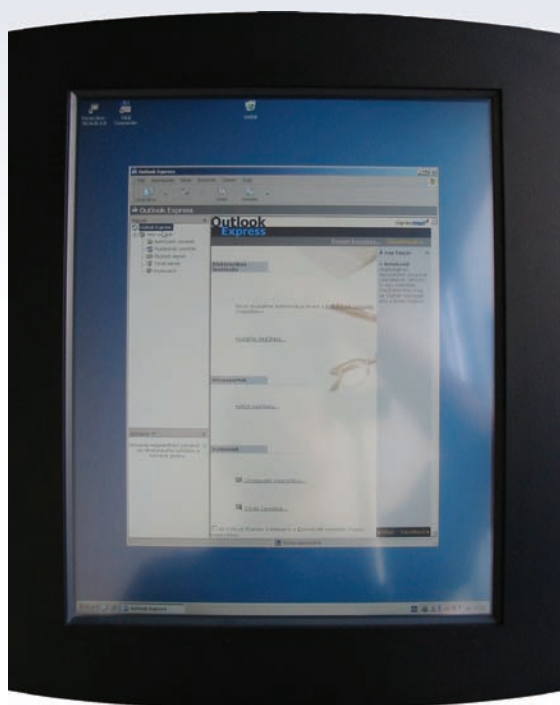
Useful in every area of life where information must be presented to inquirers in a prompt and well-systemized way. With touch screen interactivity, it is much easier for the user to get the desired information.

The desk's information content can be easily and cost effectively amended during office hours, even during visit time or also while operating. Much information which cannot be put up in the waiting-hall because of a lack of space can be installed. Films, sounds and databases can be displayed on it, which can make information procurement in the specified matter more interesting. Due to its modern, elegant design it can be installed anywhere and it fits easily into one's environment.

The product, owing to the IBM PC control, operates with a standard connection and connection to the system is easily dealt with. Program usability is free, and our customers can develop their own software and run this on it.



IP-1 – SM130101



#### Technical parameters

- Touch-screen operating
- Loadable with particular content
- PC operating
- It works individually as well as connected to an IT network
- Decorative, stainless steel cover
- Accessible also for physically handicapped persons

#### Options:

- 3" thermal printer, cutter, presenter
- Optional operating system

The product due to an IBM PC control dispose with a standard connection, the connection to the system is easily solvable. The usability of the program is free, their elements can be easily configured and developed according to the single requirements.



## ACTIVE CUSTOMER MANAGEMENT

The ideal solution for customer management. Increases predictability/ planning continuously, not only for the company but also for customers, reducing tension between the two; and it additionally helps with orientation. All this yields more efficient, qualitative customer management.

Our customer calling system is modern, cost effective and can be developed for the individual. It can be used at any place where administration of the affairs of the population occurs and queues are inevitable in the conventional way. Principally, we recommend our system for state organs, mutual savings banks, suppliers, customer service offices, pharmacies and medical institutions.

### Elements of the system:

- **Local ordinal number displays** for customer management, which helps call persons to the specified place (e.g. window, consulting room).
- **Central displays:** to make visual simultaneously ordinal numbers, advertisements and other information. With a new call, the display shows the number of the calling room/window, and there is also an acoustic signal for the number of the called person.
- **Administrator calling desk:** a simplified device with hardware for new customer calling and affair closure.
- **Administrator calling desk with software** for the management of complex administration duties (requiring an administrator PC workstation)



IKK-1 – SM130204



SM130201



INK-1 – SM130202

Statistic and monitoring software modules: continuous monitoring of the data connected with the customers, procedures and administrators, creation and analysis of the statistic data and reports.

### Operating the system:

The customer, with the use of the touch-screen, can easily choose the required service from the menu depicted on the display of the customer calling terminal. The terminal prints and issues the ticket, which contains the chosen service and the customer number. As an option, other useful information can be indicated (e.g. the number of waiting persons).

When the person responsible for the specified service is ready to call a new customer, s/he will indicate this on the server via the administrator calling desk. Then the number of the next called customer and of the service desk will be shown on the central display and on the local number display.

An excellent possibility for better customer management and to prepare statistics! Our system gives you a chance to organise the office, e.g. opening hours, lunch breaks, attaining the most ideal number of employees.



## SECURITY DOOR (BREAK-THROUGH RESISTANT DOOR)

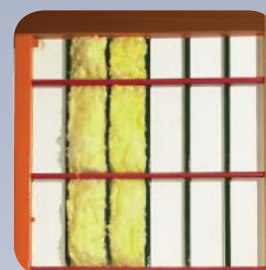


SM140101

- Security for you, your family and your valuables.
- The break-through-proof doors can be ordered in a standard size as well as a unique, specified size.
- Both indoor and outdoor design
- 2- or 4-way locking
- Protected against lifting-off and forced-entry (min. 10 point-locking depending on product type)
- The type of the décor sheet can be chosen
- With different security levels
- With an EN1143-1 certification

### Locks:

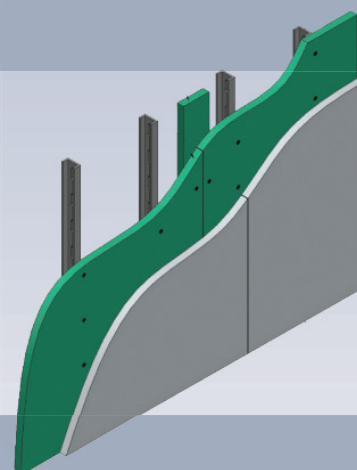
- Mottura main lock, 3 keys, 3-way locking
- Gege cylinder lock as a second lock, 3 keys



## SECURITY WALLING | BULLETPROOF WALLING

- For the complete protection of rooms vulnerable to armed attack
- To ensure partial and complete mechanical protection
- In different bullet-proof gradings
- Both indoor and outdoor design
- Both a standard and unique size
- The type of décor sheet can be chosen
- With an EN1143-1 certification

The walling is suitable for the protection of cash-desks and cash-cabins.  
See next page



## BULLET-PROOF DOORS



SM140201

- Safety doors with an aesthetic aspect, offered in different bullet-proof grades.
- Both indoor and outdoor design
- Profile steel structure
- 2- or 4-way locking
- Protected against lifting-off and forced-entry (min. 10 point locking depending on the product type)
- For the complete protection of rooms vulnerable to armed attack
- Both a standard and unique size
- The type of the décor sheet can be chosen
- Unique door-handles, knockers and peep-holes
- Several options
- **MABISZ certification according with EN1143-1**

### Options:

- Décor sheets or gekor film coatings
- Unique door-handles, knockers and peep-holes
- Stainless steel or copper doorstep coating
- Stainless steel spring plate
- Skylight, sidelight, two-door design





## CASH-DESKS | MOBILE CASH-CABIN



Units which can be installed as a cash-desk indoors, in a separate place, or outdoors, for banks, money exchange locations and mutual saving banks.

- Safety or bullet-proof design
- Bullet-proof glass, without a frame if one is not needed; adhesive fixed
- Bullet-proof sliding tray
- Bullet-proof desk (stainless steel design)
- Hidden microphone talk-thru kit
- Electrostatic powder coating
- Steamed beech office desk
- Also coming with complete cash-desk tools: Safes, Super-tills, Cash register, Multisafes, Money handling...
- Can be fixed
- With a power supply, heating, and a fresh air supply
- 4, 6, 8 m2, or in a size specifically required





## TRANSACTION COUNTER WITH A SAFETY WINDOW | ROTATING TRAY | ROUNDTRAY



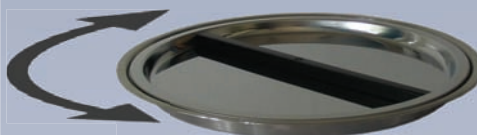
1030x790x900  
SM150101

**Cashier counter**

- Round tray
- Rotating tray
- Décor panel counter
- Safety glass
- Mounting frame

**ROTATING TRAY**

- Aesthetic look
- Separation sheet for products/cash
- Easily rotatable, with bearing
- Can be installed on an individual basis
- Ø 330mm x 22mm



SM150202

**ROUND DEAL TRAY**

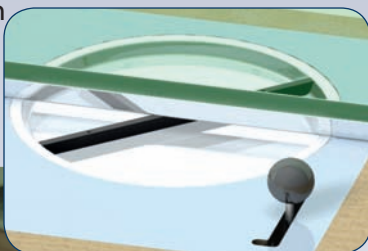
- Simple, deep draw-pressed implementation
- Aesthetic look
- Ergonomic design
- Can be installed on an individual basis
- - Ø 305 mm x 15.5 mm



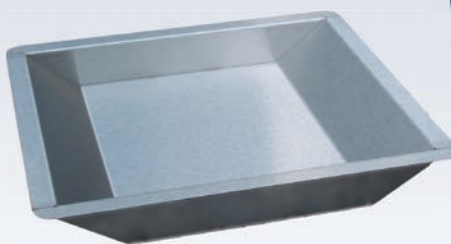
SM150201

**ROTATING TRAY WITH ARM**

- For the safer operations of cashier outlets and ticket counters
- Aesthetic look
- Ergonomically designed arm
- Time resistant implementation
- Separation sheet
- Ø 305 mm x 15.5 mm



SM150203



40x250x280  
SM150204



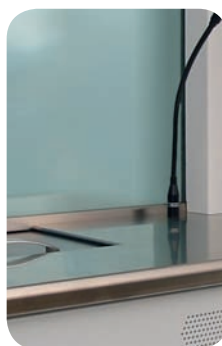
650x600x700mm  
SM150102

**Transaction counter**

- Mounting frame
- Safety glass
- A4 deal tray
- Steamed beech counter

**A/4 SLIDING CURRENCY TRAY**

- Suitable for A4-sized document transactions



SM150301



SM150302

**TALK-THRU SYSTEM**

This consists of:

- 2 microphones (super sensitive electret microphone)
- 2 loudspeakers (can be built into the counter)
- Volume control unit
- Power-supply unit 12V 1A



SM150303

## BULLETPROOF PASSERS

### TRAYS | COUNTERS | LOCK GATES

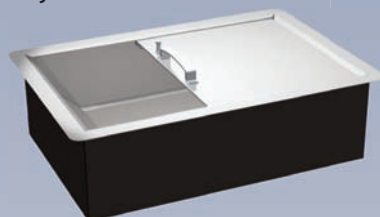


Can be easily handled, aesthetic, and made of brushed stainless steel. For banknote bundle transactions.

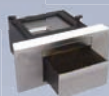


595x395x150mm  
SM151401

Adapted for pass bigger objects.



595x395x200mm  
SM151402



Fire resisting design  
SM151403



SM151201

#### For the safer operations of cashier outlets and ticket counters

- Ergonomic design, aesthetic look
- With the required bullet-resistant grading
- External in-wall mounted design
- Can be fixed in its end positions
- Deep drawer (200 mm), e. g. for passing souvenirs



#### BULLETPROOF TRANSACTION COUNTER WITH A LOCK GATE

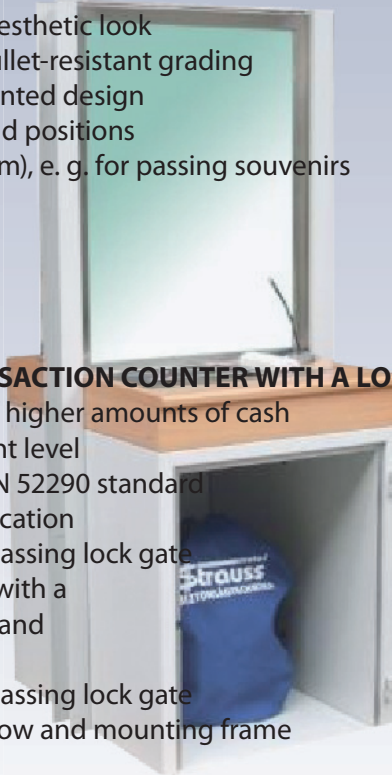
For the safe transfer of higher amounts of cash

FB4 (M3) bullet resistant level

According with the DIN 52290 standard

With an EN 1522 certification

- Bulletproof money passing lock gate
- Bulletproof counter with a bulletproof window and mounting frame
- Bulletproof money passing lock gate with a counter, window and mounting frame



#### Mounting frame for a 10 cm and 30 cm thick wall

- RAL 7035 electrostatic powder-coated
- Stainless steel frame with strong anchors for fixing
- Talk-thru system with a microphone
- In steamed beech or stainless steel

- With any bullet-resistant level
- Also coming with a polished window, without a frame; fixing with glue



800x790x900mm  
SM151301



1120x790x900mm  
SM151201



1910x790x900mm  
SM151102



2010x1020x890mm  
SM151101



## DESIGN



**MD-3d**  
SM070101



**MD-4d**  
SM070102



**MD-4**  
SM 070103

(Time delay value storage box for daytime)

**General characteristics:**

- A 3 mm thick steel sheet case, with EN 1143-1 certification BANK I
- Drawer height: 145 / 290 mm
- Colour: MD - Design: white aluminium (RAL 9006)
- ML - Light: light grey (RAL 7035)
- Operator drawer: anthracite grey (RAL 7016)
- Power supply: DC 12V with an adapter; it has in-built battery with an uninterruptible switch, where one has at least 1 hour working time if there should be a power cut.
- Optional languages: Hungarian, English, Serbian, French (on-demand)
- Switch on: with a key and start code
- External control: via PC through an RS-232 interface
- Keyboard: 13-button foil keyboard, which can be incapacitated in a case of external checking
- Alarm signals can be halted



Height x Width x Depth (mm) 685 x 455 x 605

**Drawer opening and alarm:**

- Time delay option: can be adjusted in relation to every drawer between 0-1800 sec.
- Opening with variable length codes (2-8 digits), and with reference to the drawer number.
- Can be operated with a multilevel code system and with different authorities.
- Only one drawer can be opened at any one time (depending on entitlement and setting)
- After expiry of the time delay, the drawer opens only after the code has been entered again (optional).
- Left-open drawer: after the previously set time (at the end of the drawer opening time), there will be a warning signal
- Using the supervisor / daily closing function: all drawers will open at the same time without there being a time delay.
- Cover monitoring: any cover breakage will generate an alarm.
- Silent alarm: during normal operations with small value drawers, opening times for big-value drawers can be doubled or blocked (depending on settings)
- Loud alarm: it sounds an alarm and blocks the drawers
- Alarm input: every drawer is switched to time-delay mode; the safe can be blocked in relation to the external alarm's signal.
- Alarm output: with opening and closing contacts

**Security product of the year 2006**  
**Awarded the Hungarian Design Prize 2007**



## LIGHT



**ML-3d**  
SM070201



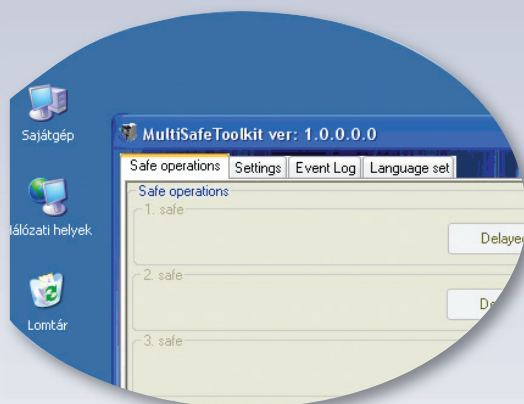
**ML-3**  
SM070202



Height x Width x Depth (mm) 685 x 455 x 605

## OPTIONS:

- All function can be operated also on a PC via an RS-232 interface.
- With wood graining paint



**BET-7**  
SM011109



**BMT-7**  
SM011110



**KBL**  
SM011106



**DEPOSIT-4**  
SM011114



**FBL**  
SM011103



**FET**  
SM011104



**FMT**  
SM011105



**DEPOSIT-3**  
SM011113

## CASH REGISTERS

## CASH DRAWER

- For quick and safe money handling
- It can be installed under one's desk
- With a massive, long-life strong ball guide
- Coin tray for change handling
- Banknote holding with 8 adjustable trays
- A Strauss-Metal safety lock, with 2 keys
- Colour: RAL 7042 middle grey

Model	Dimensions	Code
	H x W x D	
PF-1K	110 x 553 x 270	SM010901
PF-1E	110 x 553 x 270	SM010902
PF-1P	110 x 533 x 270	SM010903
PF-2K	230 x 410 x 602	SM010911
PF-2E	230 x 410 x 602	SM010912
PF-2P	230 x 410 x 602	SM010913

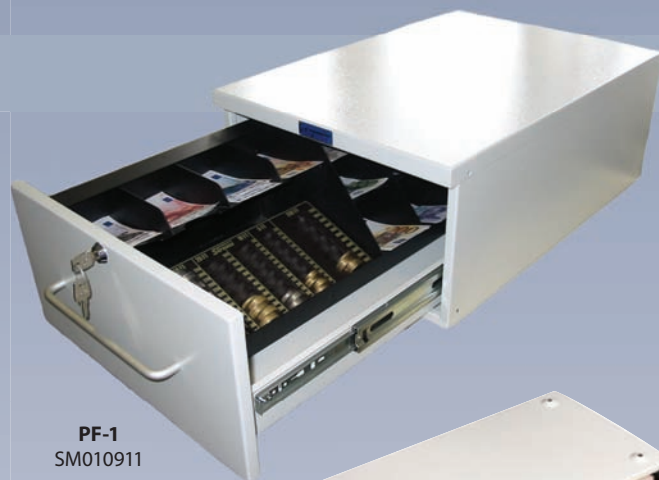
## Options:



Cylinder lock  
SM 010901  
SM 010911



Electronic lock  
(time delay option)  
SM010902; SM010912



PF-1  
SM010911



PF-2  
SM010901

USB



Pc operating  
SM010903; SM010913

NEW

## FLIP TOP CASH DRAWER

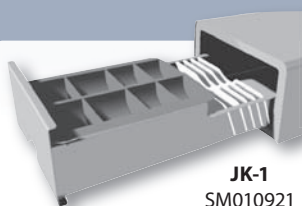


FP-1 – SM010931

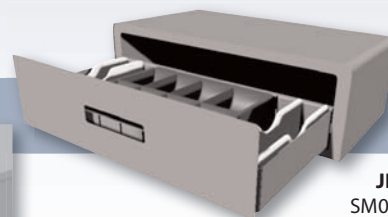
- Metal cash drawer
- Key and also via PC electronic opening
- Can be fitted into a desk
- Removable banknote and coin tray for rapid and correct money placement
- 460 x 170 x 100 mm

## VEHICLE CASSA

- For easy and rapid money handling in vehicles
- With 4 fixing bores on the bottom sheet
- Removable coin tray
- RAL 9005 Electrostatic powder-coated
- Strauss-Metal safety lock



JK-1  
SM010921



JK-2  
SM010922

## BANKNOTE TRAP

- Massive, lockable metal box for banknotes
- Provides safe cash money circulation
- With its use, one is able to lower the possibility and risk of casual robbery/theft.
- One particular key must be removed from the rack, and another key opens the money store unit
- Fixing with four "6" screws
- Colour: RAL 9005 black

BCS-1  
SM011001





# CASH REGISTERS



**MT-A5**  
SM010103  
32x199x159 mm



**MT-A4**  
SM010102  
40x312x214 mm



To store HUF,  
Euro or coins on-demand  
**ET**  
SM010201  
40x307x153 mm



**FET 2**  
SM011115  
50x180x245mm



**KBL**  
SM011106  
50x180x245mm



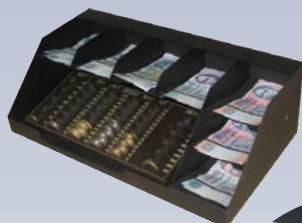
**FBL**  
SM011103  
58x356x435 mm



**FET 1**  
SM011104  
58x356x435 mm



**FMT**  
SM011105  
58x356x435 mm



**BET-7**  
SM011109  
135x430x245 mm



**BMT-7**  
SM011110  
135x430x245 mm



**BET-7F; BMT-7F**  
SM010704; SM010705  
170x527x254 mm



**BET-10**  
SM011111  
135x520x245 mm



**BMT-10**  
SM011112  
135x520x245 mm



**BET-10F; BMT-10F**  
SM010706; SM010707  
170x524x254 mm



**KET - KMT**  
SM010702 - SM010703  
145x315x230 mm - 145x315x230 mm



**FKET**  
SM010708  
95x315x245 mm



**CODEX**  
SM010801  
70x210x160 mm



**A/6 PK**  
SM010304  
68x128x118 mm



**A/6 PP**  
Pénzpersely  
SM010401



**A/5 PK**  
SM010505  
82x202x165 mm



**PLASTIC TILL**  
SM010101  
68x325x225 mm



**A/4 PK**  
SM010601  
95x320x220 mm



## ISZ (DOCUMENT CABINET)

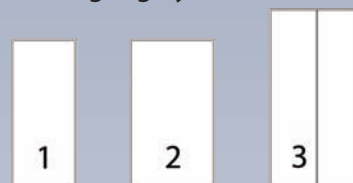


- Essential for effective document management
- Made of massive, high quality steel sheet
- Aesthetic, time resistant design
- Three-point locking door, with a EUROLOCK safety lock
- Can be fixed to the floor
- Shelf height can be adjusted by 5 cm
- Electrostatic powder coating, RAL 7035 light gray



### Options:

- An inner, separately lockable compartment
- Additional shelf
- Electronic lock



Model	Ext. dim. (mm)	Shelves	Code
	H x W x D	(pc)	
ISZ-1	1500 x 650 x 450	3	SM080101
ISZ-2	1500 x 850 x 450	3	SM080102
ISZ-3	1800 x 950 x 450	4	SM080103

## HANGING FOLDER FILING CABINET

- The perfect solution for well-systemized, easily accessible document storing
- Made of high quality steel sheet
- The drawers can be locked at one go
- Label holders on drawers
- Full-extension drawer slides
- RAL 9005 black, RAL 7035 light grey

### Options:

- With hanging folders
- Self-closing slides



1320 x 410 x 620 mm  
SM080701



1320 x 780 x 620 mm  
SM080702

## FIRE-PROOF DOCUMENT CABINET



### MABISZ A certification according with EN1143-1

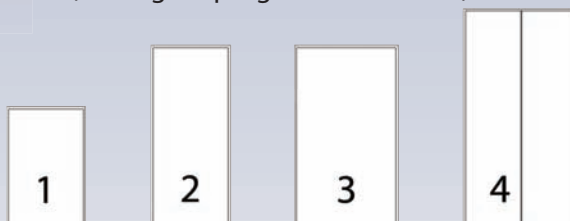
- The document safe guarantees 30 minutes fire resistance given a 660 °C external temperature
- Every side is dual-wall made for fire resistance; between sheets there is a 25 mm thick insulating material
- With a VdS-1 certified **MAUER** key safe lock
- Doors are locked by several bolts and in various directions
- Anti-warp device to impede hinge-side warping
- Shelf height may be adjusted by 5 cm
- Delivered with a multipoint fixing set
- RAL 7035 light grey
- The schedule contains the optimal number of shelves\*

### Options:

- Extra shelf; an internal, separately lockable fixed compartment
- Data-box for data holders
- RAL 9005 black, 7035 grey
- A KABA La Gard electronic combination lock
- (2x6 digit reprogrammable code)



SD-1



Model	Dimensions (mm) H x W x D	*Shelves (pc)	Locking bolts (pc)	Code
FIRE-1	1000 x 650 x 450	2	5	SM080301
FIRE-2	1500 x 650 x 450	3	5	SM080302
FIRE-3	1500 x 850 x 450	3	5	SM080303
FIRE-4	1800 x 950 x 450	4	5	SM080304
SD-1	210 x 362 x 279	-	-	SM110901
SD-2	345 x 387 x 308	-	-	SM110902
TF-1	1400 x 500 x 710	-	-	SM110903

### DATABOX

- A dual-wall box, filled with 30 minutes fire resistant material for data holders
- Protection against fire, water, and electrostatic dust
- Light grey colour
- Closure with a key lock

### FIRE RESISTANT HANGING HOLDER

- 60 minutes fire resistance for papers (at 1000 °C - NT FIRE 017)
- Safety lock, 2 keys
- Can be ordered with a 1, 2 or 4 drawer design
- With a drawer marker label holder
- RAL 7035 light grey

**Option:** delivered with insets



TF-1

## CABINETS WITH DRAWER (Map container)



In the drawing paper cabinet, large-size drawing papers (or other documents) can be stored. The cabinet is made of welded quality steel sheet. The drawers unified height is 45 mm; they run on telescopic roller rails; and their carrying capacity is 40 kg. The cabinet is mounted with central lock.



- The number of drawers is optional
- High carrying capacity
- A solid, long-standing design
- Main-door closure
- Powder-coated, RAL 7035 light grey

## ET – SAFETY CUPBOARD



**MABISZ A** certification according with EN 1143-1

- Dual-wall; both the external and internal wall is made of 1,5 mm thick steel sheet.
- Doors are locked by several bolts and in various directions.
- Mounted with an anti-warp device to impede hinge-side warping
- Mounted with a VdS-1 certified **MAUER** key safe lock
- Shelf height may be adjusted by 5 cm
- Can be anchored on several points; delivered with a fixing set
- RAL 7035 light grey

### Options:

- A KABA electronic combination lock (2x6 digits can be encoded again)
- Additional shelf
- An internal, lockable fixed compartment



Model	Dimensions (mm) H x W x D	Locking bolts (pc)	Shelves (pc)	Code
ET-1	1500 x 650 x 450	5	3	SM080202
ET-2	1500 x 850 x 450	5	3	SM080203
ET-3	1800 x 950 x 450	5	4	SM080204



## LOCKERS

- High quality lockers with optimal place usability
- The division difference enables the appropriate placement
- With the segmented door design the number of dressing compartments can be doubled
- Both in normal and standing designs
- Both with one door and a segmented door design



- All models are made for rooms with major traffic and have been designed for high-level requisition
- Owing to the electrostatic powder coating, it is easy to clean and keeps its new condition for a long time
- The basic design colour is light grey; as an option, doors can be ordered with a colored design, too
- All lockers are mounted with a gilled blowhole
- The raw material is 1st class steel sheet



SM080901  
1 door

SM080901 - 1 door  
SM080901 - 1 door  
SM080902 - 2 doors  
SM080903 - 3 doors  
SM080904 - 4 doors  
SM080905 - 2 doors divided  
SM080906 - 4 doors divided  
SM080907 - 2 doors "Z" segmented  
SM080908 - 4 doors "Z" segmented



### Lock structure:

- A safety lock with 2 keys (basic design)

### Option:

- Main key system
- Number combination lock
- Electronic lock
- Proximity reader



### NOVELTY!

- Central opening
- It can be integrated into a system



## ESZ - MULTICOMPARTMENT VALUE CONTAINERS

- The container has 5, 10 or 12 separately lockable compartments
- Compartments are mounted with 2 key Strauss safety lock
- Can be ordered with a main door design
- At several points it can be anchored to the floor or to a wall
- With a Strauss-Metál safety lock
- RAL 7035, light grey (basic design)

### Lock option:

- Cylinder lock
- Coin lock
- Electronic locking



### NOVELTY!

- Central opening
- It can be integrated into a system



SM080601



5 box - SM080501  
10 box - SM080502  
12 box - SM080503



Optional layout and colour



SM080604

SM080602

SM080605

## VT - CHEMICALS SAFE

- For the safe storage of chemicals, poisons and volatiles
- Mounted with a EUROLOCK safety lock; door locks at 3 points
- Air outlet on the top, airway on the door
- Zinc steel sheet shelves
- Shelf height may be adjusted by 5 cm
- RAL 7035, light grey

### Options:

- Separately lockable compartment for poisons
- Hose for a wall connection
- Fan
- Explosion-safe fan
- Extra shelf

Model	Dimensions (mm)	*Shelves	Code
	H x W x D	(pc)	
VT-1	1500 x 650 x 450	3	SM080401
VT-2	1500 x 850 x 450	3	SM080402
VT-3	1800 x 950 x 450	4	SM080403



## RECEPTION SAFES



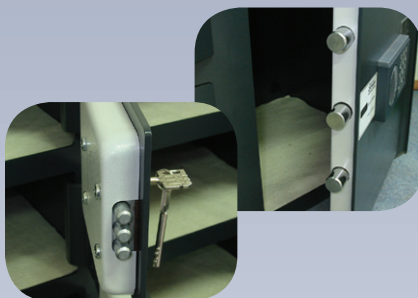
### MABISZ A certification according with EN 1143-1

- Basic equipment with a **MAUER** key lock with 2 user keys
- The lower large box can also be mounted with an electronic combination lock
- 1132 x 700 x 333 mm
- Also in unique sizes, as required
- An E-LO safe lock

Grade 0 - SM060108+SM110501  
Grade I - SM060208+SM110501  
Grade II - SM060307+SM110501



SM081101



Code is noted on page 12.

### TRESOR WITH 12 COMPARTMENTS FOR VALUE STORAGE

- E-LO key lock  
(master key with pre-opening function + key for clients)

SM081111

## ROOM SAFES



SM050111

### INTELLIGENT HOTEL SAFE

- Chip-card utilization mode
- Adaptable to intelligent hotel management systems, can be ordered with integrated system
- Size: 153 x 360 x 385 mm



SM040401  
SM040402



SM050105

### HOTEL ROOM SAFES, LAPTOP SAFES

- Key lock
- Electronic lock
- 4-digit adjustable codes
- Emergency opening code
- Automatic opening

SM050101  
SM050102  
SM050103  
SM050104

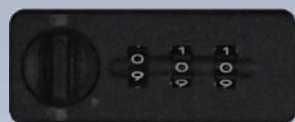




## DEEP DRAW-PRESSED KEY BOXES

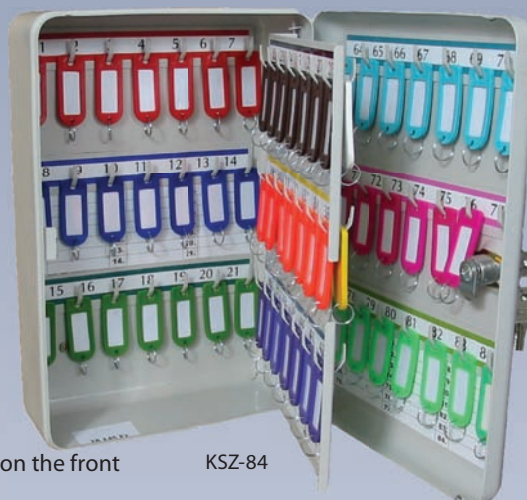


KSZ-20



KSZ-42

RAL 7035 light grey, with a key symbol on the front



KSZ-84

Model	Dimensions (mm)	Key capacity	Code
	H x W x D	(pc)	
K-20	204 x 166 x 65	20	SM020101
K-28	320 x 220 x 65	28	SM020102
K-42	320 x 220 x 65	42	SM020103
K-84	320 x 200 x 100	84	SM020104

**Markers**

SM 110801 - dark green  
 SM 110802 - light green  
 SM 110803 - red  
 SM 110804 - pink  
 SM 110805 - purple  
 SM 110806 - white  
 SM 110807 - dark blue  
 SM 110808 - light blue  
 SM 110809 - yellow  
 SM 110810 - orange  
 SM 110811 - black

- Provides a safe and systematic storage space for the keys
- In every line there are different colored and numbered markers for the keys
- The edge gives a special form of reinforcement to the box
- With a register chart
- Accessory: fixing set

**Lock options:**

- cylinder lock
- number lock
- electronic lock

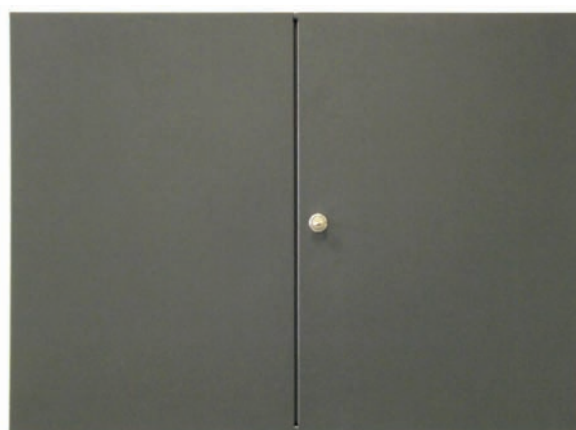


## PRESS-BRAKED KEY BOXES

Model	Dimensions (mm)	Key capacity	Doors	Code
	H x W x D	(pc)	(pc)	
K- 50	560 x 360 x 75	50	1	SM020110
K-100	560 x 360 x 75	100	1	SM020111
K-200	560 x 360 x 100	200	1	SM020112
K-200	720 x 560 x 75	200	2	SM020113
K-300	560 x 360 x 150	300	1	SM020114
K-400	720 x 560 x 100	400	2	SM020115
K-600	720 x 560 x 150	600	2	SM020116



KSZ-200



RAL 7016 dark grey

## KEY STORAGE WITH A PLASTICINE LOCK

- Guarantees control opportunities for the integrity of closed cabinets, store places, boxes, etc.
- They are locked with a seal via which the user can be identified
- Seals can be ordered with a unique engraving or from an existing series, with the next serial number
- The seal contains hidden marks which makes reproduction difficult

### Plasticine padlock:

- A spring wire at the unhinging breaks the plasticine
- There is a circle rim on the padlock to disallow the extrusion and reinstalling of the frozen plasticine

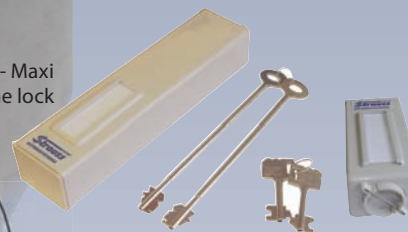
### Key box with a plasticine lock:

- Suitable also for key bunch storage



**Storage cabinet for key-box with plasticine lock**  
High grade safety to avoid manipulation attempts

SM020305 - Maxi  
Key-box with plasticine lock



SM020301 - Standard  
Key-box with plasticine lock

SM020304 - Plasticine padlock  
SM020302 - Seal set  
SM020303 - Customized seal

## KEY SAFES



- Safety key boxes with a MABISZ certification according with EN 1143-1, offering higher safety than normal key boxes
- The safe is made of 3 mm thick steel sheet and the door is made of 6 mm thick steel sheet
- The lock mechanism is electronically operated

SM020401 - 50 key capacity  
SM020402 - 90 key capacity  
SM020403 - 130 key capacity  
SM020404 - 170 key capacity



## WITH EVEN MORE 1000 KEY POST



SM020701  
Hanging lamellar key safe

**KSL-500**  
SN D-5 - 500 key capacity

- Apart from high grade safety, this is suitable for storing a bigger key quantity
- MABISZ D certification, which is equal with **Grade 0** according with EN 1143-1
- More 1000 key fits on the pull-out storing sheet
- Key management is possible with different colored markers on every line



## INTELLIGENT KEY BOX

**For safety and verifiable key management in business centres, bureaux, and related facilities**

- Events can be logged in their entirety; the key removing persons and the time of key return can be ascertained
- The circle of the authorized persons can be specified
- Time limits can be assigned with usage
- Access to the box arises with a:
  - PIN code
  - Chip or proximity card
  - Fingertip scanner



SM020501 - IQkey controller  
SM020502 - IQkey expander

The basic box with its control unit is for 50 keys, though this can be increased to 800 keys.

Can be operated as a single device; or with PC control it can be operated with the use of supervisory and operator software.



662 x 765 x 735 mm

### INTELLIGENT POSTING SAFE

A special service for the safe handover of keys, valuables and documents.

Operation parameters are the same as those pertaining to the intelligent key box.



SM081201 - IQ-post

## FIRE SERVICE EMERGENCY KEY-SAFE

### Tube safes

If there is a fire, it facilitates the entry of the fire brigade without burning or charring.

Our emergency key-safes are made of stainless steel, and the massive design guarantees safety and functional operations.



One-user opening  
Main key design

KS-1  
SM020601  
Ø50 x 180  
Certificat number: TMT 41/2011



Electronically operated;  
opening with remote  
authorization

KS-3  
SM020603  
Ø50 x 230  
Certificat number: TMT 41/2011

Electronically operated, local opening (Pinpad, Proximity, Dallas chip) or opening with remote authorization; a keyless (Push) design



KS-5  
SM020605  
Ø50 x 230

### Emergency key box



VK-1  
SM020201  
118 x 127 x 25 mm



VKK-1  
RAL 3000

### Emergency key safe

- Single use opening, main key system
- Electronically operated, opening with remote authorization



90 x 150 x 60 mm  
Certificat number: TMT 42/2011



## POSTING SAFE



SM 081001



Office posting safe  
600 x 900 x 400 mm  
SM081001



Compartment size: 118 x 185 x 350 mm  
Cabinet size: 1800 x 700 x 363 mm  
(24 compartments)  
SM 081007

Multi-compartment safe for document and valuables' storage; with 24, 48 or 100 compartments. The perfect solution for effectively handling and sorting letters or official documents; aesthetic, time-resistant implementation, with numbers on the doors.

The product is suitable for areas of hand-over mail, postal matters, bank extracts (which will require greater safety) and business valuables e.g. keys, registration books. Other possibilities of application: receiving of letters, postal packages, online shop packages all day and night. Suitable for development into an integrated system.

### Version:

- Built into a wall (front or back loaded)
- Standing on separate tube legs (with or without a main door)
- Cupboard shaped with or without a main door)

### Cover:

- Electrostatic powder-coated
- Stainless steel
- Wooden cover

### Locks:

- Strauss-Metal security lock
- **MAUER** safe lock
- Electronic lock:
  - With a pin code
  - With a proximity reader
  - With a Dallas-chip
  - With a chip card



Compartment size: 82 x 142 x 215 mm  
Cabinet size: 1990 x 950 x 220 mm  
(100 compartments)  
SM 081004



## PISTOL SAFE

- For high safety storage of pistols, with a separately lockable ammunition box
- The door is made of 6 mm thick steel sheet
- Strong, cylinder-shaped closing bolts
- A **MAUER** safety lock with 2 double bit keys
- Available in wall safe and furniture safe designs
- The furniture safe is **MABISZ S-1** certified according with EN 1143-1
- The wall safe is **MABISZ C** certified according with EN 11443-1 (depending on mounting execution)



235 x 340 x 275 mm  
SM090401

## 16 COMPARTMENT PISTOL CABINET



SM080601

### PISTOL HOLDER BOX

- Made of deep draw-pressed steel sheet, with a foam lining
- According to legal specifications, ammunition is to be stored separately from weapons
- The ammunition box can be locked separately
- Moderately fire-proof
- Can be fixed to furniture with screws
- A Strauss-Metál safety lock
- Portable



SM090301  
90 x 320 x 220 mm



SM090502

### FSZ-L LIGHT GUN CABINET

- Suitable for storing 5 or 10 hunting or sports guns according to legal specifications (FSZ 5-L, FSZ10-L)
- Locking with a Strauss-Metal safety lock, on a 3-point closing door
- Mounted with 2 anti-strainings to prevent the strap side strapping
- Separately closable large-sized ammunition box, with a EUROLOCK safety lock
- Weapon support with foam protection for one- or two-barrelled weapons
- Cleaning stick holder mounted on the door
- Can be fixed at several points to the wall and to the floor
- Delivered with a fixing kit
- Colour: RAL 6003 green

Model	Dimensions ( mm )
	H x W x D
FSZ-5-L	1500 x 350 x 280
FSZ-10-L	1500 x 700 x 280



SM090101



## GUN CABINETS



### FSZ – MODELS 5, 8, 10



FSZ-5  
SM090201

- A reinforced safety gun cabinet
- Euronorm certification, produced in accordance with standard VdMA 24992
- S1 certification according with EN 14450
- Suitable for storing 5, 8 or 10 hunting or sports gun according to legal specifications
- With a big sized, lockable ammunition box, and with a Strauss-Metál safety lock
- The main door is locked with a **MAUER** safety key lock; the door closes at several points
- With 4 massive rotating locking bolts
- Mounted with 2 anti-strainings to prevent the strap side strapping
- Weapon support with foam protection for one or two barrelled weapons
- Cleaning stick holder mounted on the door
- Can be fixed at several points to the wall and to the floor (delivered with a fixing set)
- Colour: RAL 6003 green
- Beside the models above, we also produce a cabinet that fits to **VDMA 24992 "B"** standard

Model	Dimensions ( mm )
	H x W x D
FSZ-5	1500 x 350 x 280
FSZ-8	1500 x 557 x 280
FSZ-10	1500 x 700 x 280
FSZ-10/6	1500 x 700 x 280

### MODEL FSZ 10/6

- Suitable for storing 6 hunting or sports guns according with legal specifications
- With a smaller and a bigger, separated box for storing ammunition, with Strauss-Metal safety lock
- Storing possibility with a shelf divisible into 5 parts (the basic design comes with 2 shelves)
- Other parameters are as those pertaining to cabinets FSZ – 5, 8, 10

#### Options:

- Electronic combination lock
- Extra shelves (for FSZ 10/6 model)

From the above model we additionally produce cabinets with a design that fits to standard VDMA 24992 "B"



FSZ- 10/6  
1500 x 700 x 280 mm  
SM090204



The gun cabinets can also be ordered with a design mounted in a wooden cabinet made of oak, with a hand-engraved hunting motives.



**Strauss Metal**

H-7630 Pécs, Mohácsi út 107.

**Manager:** Strausz János

**Telephone:** (+36) 72 511-707 • (+36) 72 511-706

**Fax:** (+36) 72 313-354

**E-mail:** [info@straussmetal.hu](mailto:info@straussmetal.hu)

**Web:** [www.straussmetal.hu](http://www.straussmetal.hu)

**Skype:** [straussmetal\\_sales](https://www.skype.com/name/straussmetal_sales)

**GPS coordinates:**

N: 46. 07 08 60

E: 18. 26 96 00

Your partner:

